

Don't Be a road hazard with your travel trailer

PRESENTERS:

NIC KAY

DREW MATTHEWS

ABOUT
YOUR
PRESENTER
-Drew Matthews-



About Torklift Central

Single bay shop founded in 1976 by Jon Kay
Fully equipped for developing new products

Manufacturing facility in Sumner, WA in 2012

Manufacturing facility in Royal City, WA in 2019

Internationally recognized





- **Legendary Lifetime Warranty**
- **12 Patented products**
- **Award winning company**
- **Featured in multiple publications**

COMMUNITY INVOLVEMENT



- Support local families in need
- 11 years of Turkey Challenge
- Raised *\$183,000*
- Collected *75,000* lbs of food



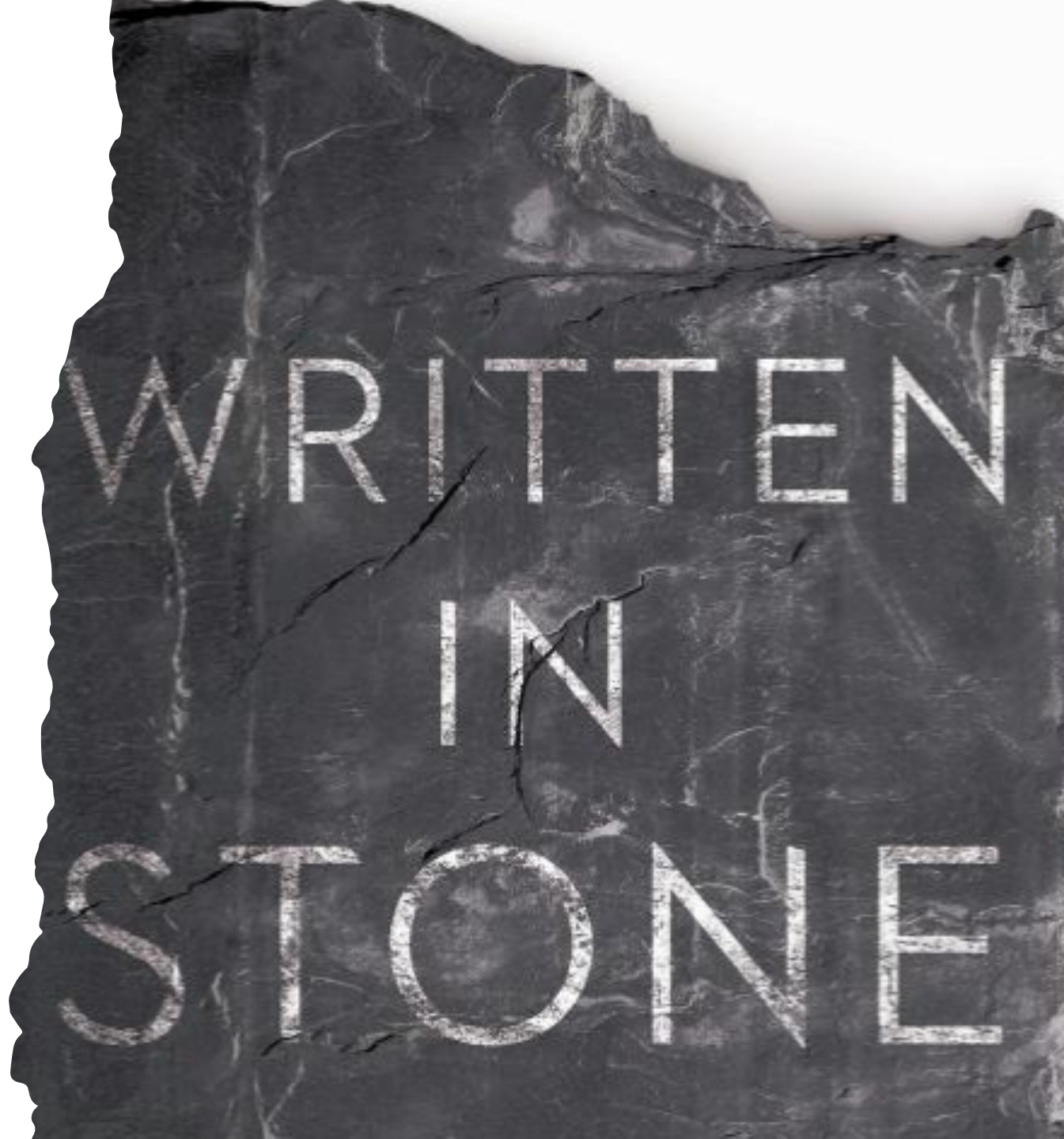
Points we
are going to
cover:

1. Truck Capacities
2. Selecting A Trailer
3. Truck Safety & Longevity
4. Annual services
5. Accessories



Why is this important?

WHAT ARE SOME
RULES ABOUT YOUR
TRUCK AND TRAILER
THAT ARE “WRITTEN
IN STONE?”



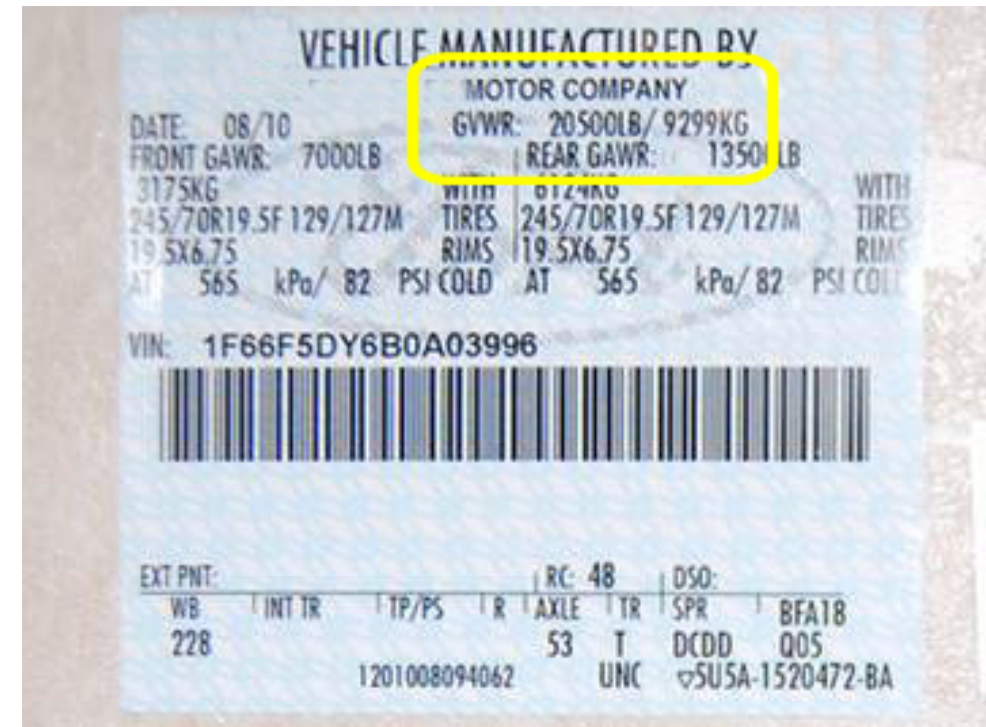
What's Doing the hauling:

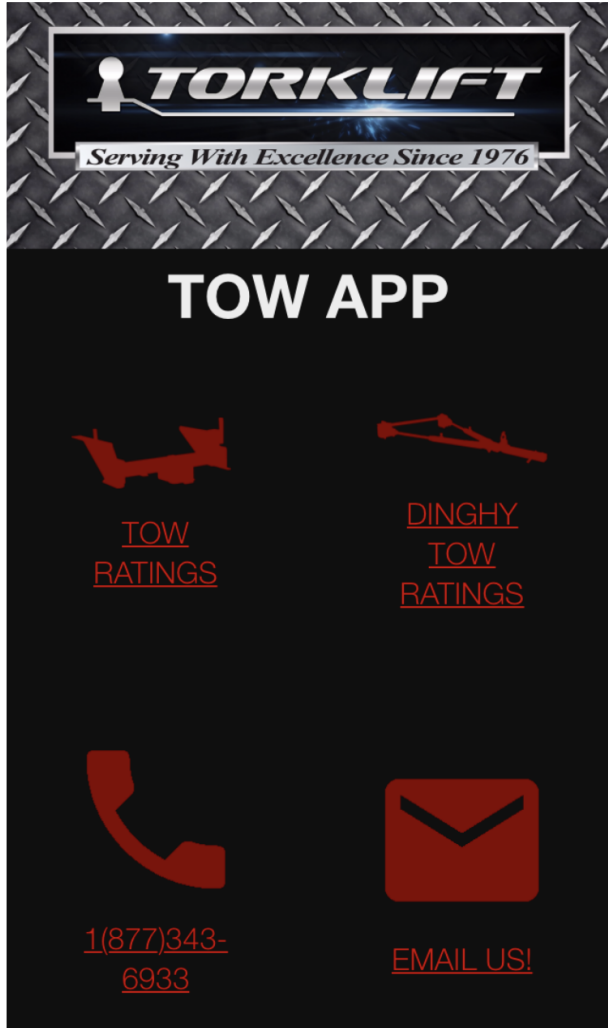
Your Truck

Every vehicle has a GVWR (gross vehicle weight rating)

Towing Capacity Variables

Where to locate your vehicles towing capacity:





Download Torklift
Central's Towing
App



Tow Ratings

<u>2011</u>	<u>2012</u>
<u>2013</u>	<u>2014</u>
<u>2015</u>	<u>2016</u>
<u>2017</u>	<u>2018</u>
<u>2019</u>	

Download Torklift
Central's Towing
App



2019 TOW RATINGS

KEY TO CHARTS


VEHICLE		GV		PV		SWB	
Reg Cab	Regular Cab	SRW	Single Rear Wheel	SRW	Passenger Van	LWB	Long Wheelbase
Ext Cab	Extended Cab	DRW	Dual Rear Wheel	DRW	Single Rear Wheel	EL	Extra Length
CC	Crew Cab	AWD	All-Wheel Drive	AWD	Front-Wheel Drive	LFR	Low Roof
DC	Double Cab	FWD	Front-Wheel Drive	FWD	Rear-Wheel Drive	MR	Medium Roof
SB	Shortbed	RWD	Rear-Wheel Drive	RWD	Two-Wheel Drive	HR	High Roof
Std Bed	Standard Bed	4WD	Four-Wheel Drive	4WD	Four-Wheel Drive	EHR	Extra-High Roof
LB	Longbed						
CV	Cargo Van						

ENGINE	GEAR RATIO		
DAE	Dual Asynchronous Electric	b	3.08:1
TC	Turbocharged	c	3.15:1
TD	Turbo Diesel	d	3.21:1
SC	Supercharged	e	3.23:1
		f	3.31:1
		g	3.42:1

a	Automatic Transmission	ms	Manual Transmission, 6 Speeds
a6	Automatic Transmission, 6 Speeds	p	Cooling or Other Accessory Package Required
a8	Automatic Transmission, 8 Speeds	t	Tow Package/Upgraded Tow Package Required
a9	Automatic Transmission, 9 Speeds	/	For Maximum Tow Capacity
a10	Automatic Transmission, 10 Speeds	-	Either Or
m	Manual Transmission	-	More Than One Footnote Applies

VEHICLE	ENGINE	TOW LIMIT (lbs.)	DODGE
ACURA			Dodge Durango RWD/AWD 3.6L V-6 6,200 (t)
MDX FWD	3.5L V-6	3,500 (t)	Dodge Durango RWD 5.7L V-8 7,400 (t)
MDX SH-AWD	3.5L V-6	5,000 (p, t)	Dodge Durango AWD 5.7L V-8 7,200 (t)
AUDI			Dodge Durango/Durango SRT AWD 6.4L V-8 8,700 (t)
E-tron	DAE	4,000 (t)	Dodge Durango Pursuit AWD 3.6L V-6 6,200 (t)
Q5	2.0L I-4 TC	4,400 (t) *	Dodge Durango Pursuit AWD 5.7L V-8 7,200 (t)
Q7	2.0L I-8 TC	4,400 (t) *	Dodge Grand Caravan 3.6L V-6 3,600 (t)
Q7	3.0L V-6 SC	7,700 (t) *	Dodge Journey FWD/AWD 3.6L V-6 2,500 (t) †
Q8	3.0L V-6	7,700 (t)	† Hitch receiver not included in optional tow-prep package.
BMW			JEEP
X1	2.0L I-4 TC	3,500 (t)	Cherokee FWD/AWD All 2,000 *
X3	All	4,400 *	Cherokee FWD/AWD 2.4L I-4 2,200 (t)
X4	All	3,500 (t)	Cherokee FWD/AWD 2.0L I-4 TC 4,000 (t)
X5	All	7,200 (t) *	Cherokee FWD/AWD 3.2L V-6 4,500 (t)
X6	All	6,000 (t)	Compass 4WD 2.4L I-4 2,000 (t)
X7	All	7,500 (t) *	Grand Cherokee 2WD 3.6L V-6 6,200 *
FIAT CHRYSLER AUTOMOBILES			Grand Cherokee 2WD 3.0L V-6 TD 7,400 (t)
Chrysler Pacifica	3.6L V-6	3,600 (t) *	Grand Cherokee 4WD 3.6L V-6 6,200 *
* 2018 tow rating, 2019 rating not available at press time.			Grand Cherokee 4WD 5.7L V-8 7,200 *
† With locked trailer • 6,000 lbs. with third-party hitch • 5,950 lbs. with third-party hitch			Grand Cherokee 4WD SRT 6.4L V-8 7,200 (t)
			Grand Cherokee 4WD Trackhawk 6.2L V-8 SC 7,200 (t)
			Renegade 4WD 2.4L I-4 2,000 (t)
			Wrangler All 3,500 (t)
			* Tow package required for maximum tow capacity for some models, standard on others. See dealer for details. • Cherokee models without Trailer Tow Group and equipped with aftermarket Class II hitch.
			† Towing not recommended for hybrid models.

Download Torklift
Central's Towing
App

- 
- A white and blue Connell trailer is shown from a side-rear perspective. The trailer has a curved front end and a black hitch assembly. A red text box is overlaid on the right side of the trailer. The background is a dark, semi-transparent image of the same trailer.
- Trailers have a GTWR (gross trailer weight rating)
 - Gross Trailer Weight: Dry
 - Gross Trailer Weight: Wet

What's Being
Towed:
Your Trailer

TOWING FORMULA

Locate Your
Tow Vehicle GCWR



Tow Vehicle GVW



Maximum GTWR
for a trailer
you can purchase



Gross Combined Rating:

How big can my trailer be?

- Gross Combined Weight Rating (GCWR)

THE
PERFECT
MATCH!



TRAILER HITCH CLASSES

ecoHITCH®





Pull	Tongue Weight
2,000 lbs	200 lbs
 	



Pull	Tongue Weight
3,500 lbs	350 lbs
  	



Pull	Tongue Weight
5,000 lbs	500 lbs
  	



Pull	Tongue Weight
10,000 lbs	1,000 lbs
  	



Pull	Tongue Weight
17-30,000 lbs	1,700/3,000 lbs
 	

**SUPERHITCH
MAGNUM 30K**

Attaching the Trailer:
Hitch Class Ratings

Attaching the Trailer: Wiring and ballmount

■ **Trailer Wiring**

- Basic light functions (4 flat)
- Standard 7 way RV plug (round with flat bladed pins)

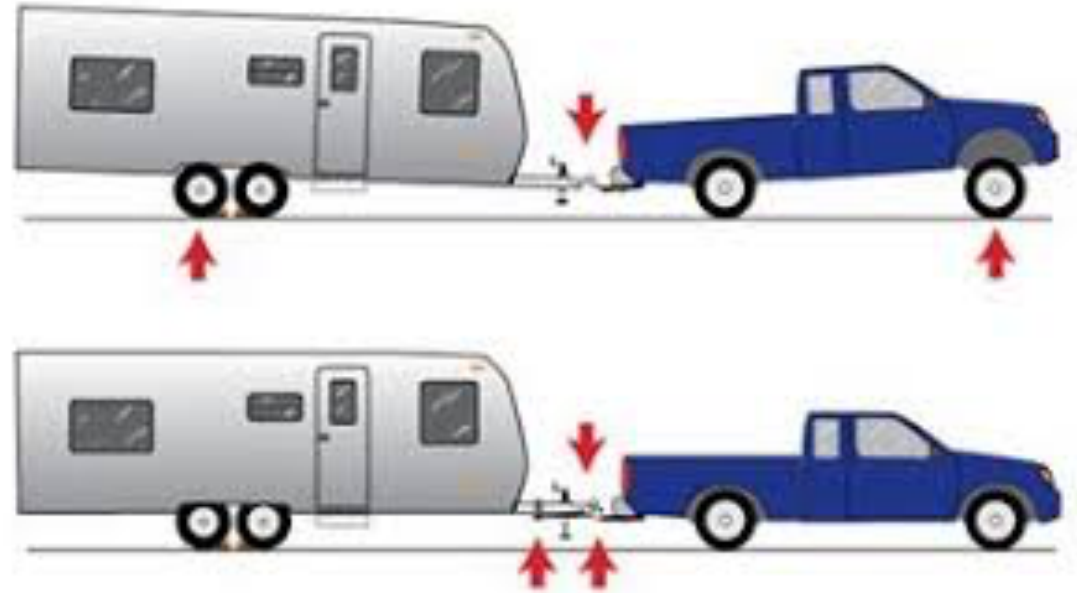
■ **Ballmount**

- Ball size
- Receiver size
- Specific drop
- Rating





**Too Much
Tongue
Weight!**



Weight Distribution

- Where is your weight?
- What is your tongue weight?
- Types of weight distribution
 - Eaz lift
 - Equalizer
 - Torklift Everest



Trailer Brake Controller

- Factory vs Aftermarket
- State requirements

Transmission Cooler

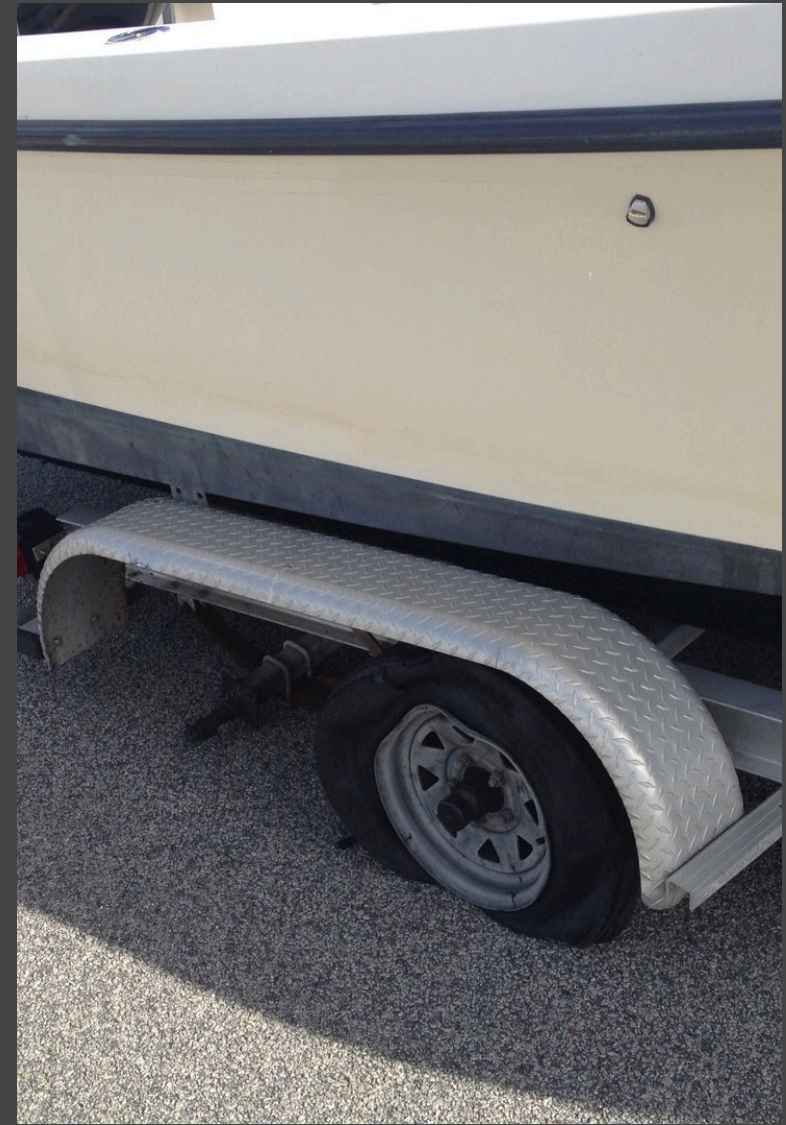


- **Your vehicle works harder when towing**
 - Hills and long distances
 - Avoid vacation disasters
 - Costly repairs

Trailer Bearing Repack



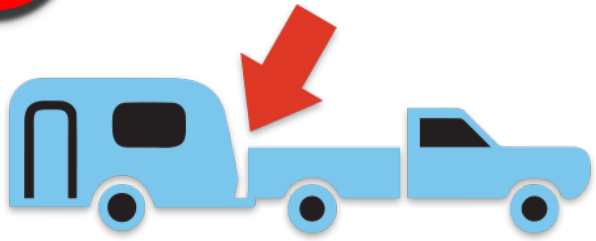
- Most commonly overlooked
- #1 cause of trailer brake down
- Axle manufacturers require annually
- Costly repairs



DON'T MISS OUT ON A **FREE** 10-POINT SAFETY INSPECTION FOR YOUR TRAILER

Get a safety inspection to avoid future damages and repairs, make sure your trailer will be ready to go when you are!

1

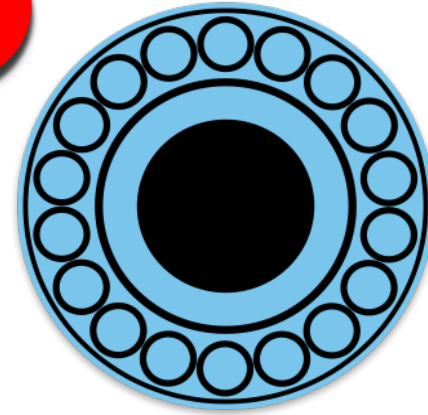


CHECK

BREAKAWAY SYSTEMS

In case of disconnect or accident,
this is crucial to stop the trailer

2



BEARING TENSION

Inspect rust damage and
bearing grease

DON'T MISS OUT ON A **FREE** 10-POINT SAFETY INSPECTION FOR YOUR TRAILER

Get a safety inspection to avoid future damages and repairs, make sure your trailer will be ready to go when you are!

3



TIRES AND AIR
PRESSURE

Under or over inflated tires
can cause further issues

4



SUSPENSION INSPECTION

Vibrations from the road can
cause things to become loose,
inspection is critical

DON'T MISS OUT ON A **FREE** 10-POINT SAFETY INSPECTION FOR YOUR TRAILER

Get a safety inspection to avoid future damages and repairs, make sure your trailer will be ready to go when you are!

5



LIGHTS

With proper working lights, your safety and the safety of others are protected

6



BRAKING SYSTEM

Includes inspection of the wiring, brake shoes, magnets, wheel cylinders and more

DON'T MISS OUT ON A **FREE** 10-POINT SAFETY INSPECTION FOR YOUR TRAILER

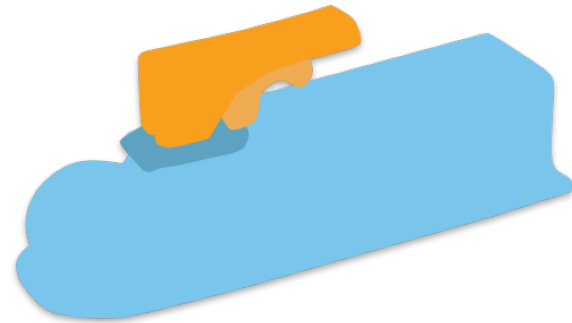
Get a safety inspection to avoid future damages and repairs, make sure your trailer will be ready to go when you are!

7



GREASE FITTINGS

Keep parts lubricated to ensure longevity and lifespan of your parts



BALL COUPLER

Prevent potential trailer disconnect

8

DON'T MISS OUT ON A **FREE** 10-POINT SAFETY INSPECTION FOR YOUR TRAILER

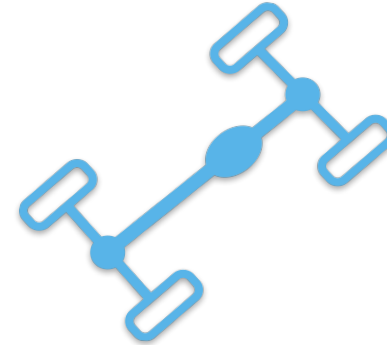
Get a safety inspection to avoid future damages and repairs, make sure your trailer will be ready to go when you are!

9



SAFETY CHAINS

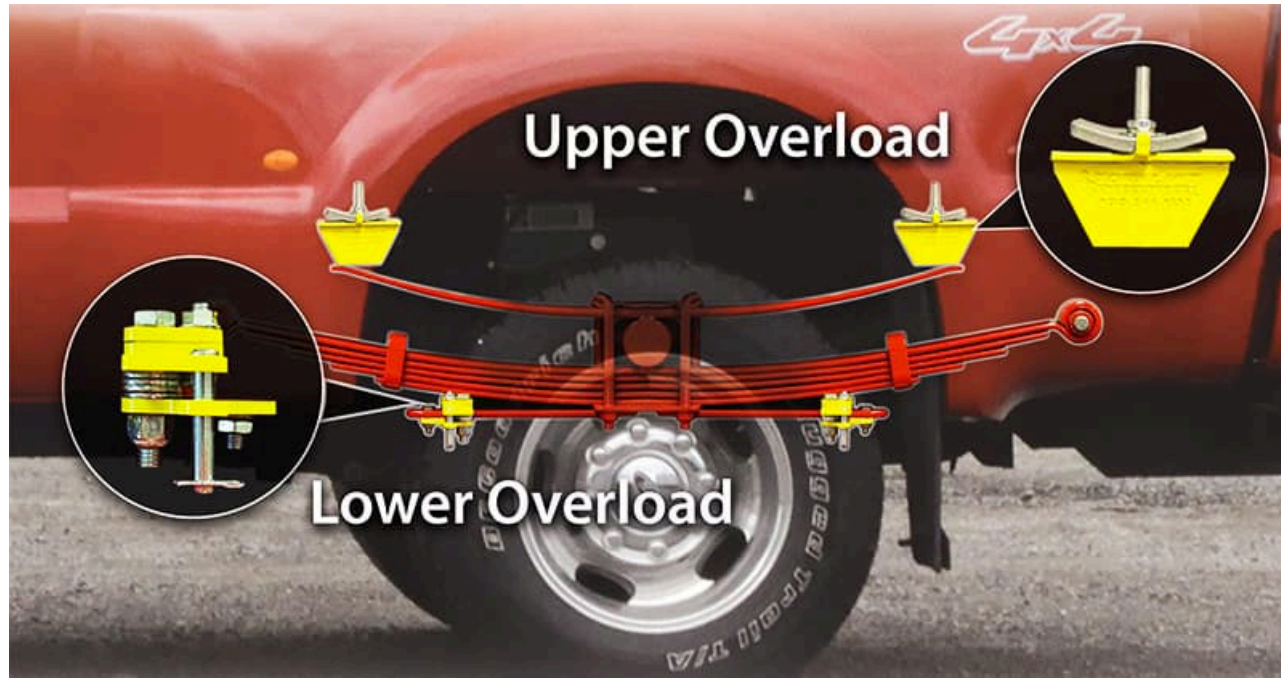
Inspect for proper length when towing as well as for wear and tear



CHASSIS AND FRAME

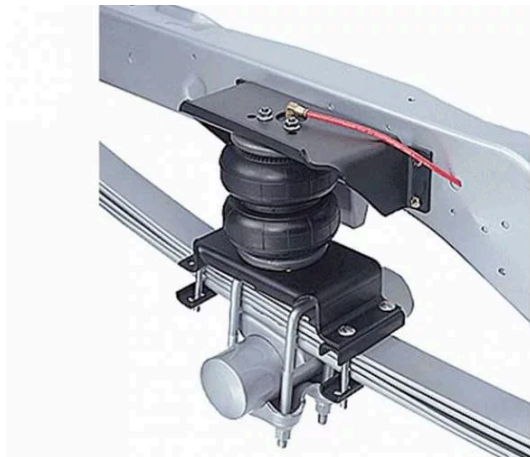
Inspect trailer for fracture points, cracks, tears, or rust in the frame

10



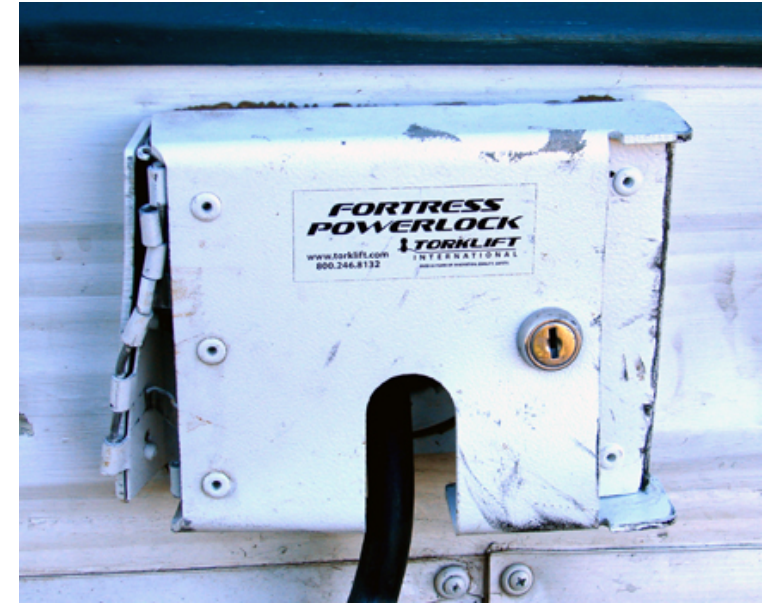
Recommended Suspension Upgrades

- Stable Loads
- Shocks
- Airbags



DEEP SQUA T





Electrical and Security

- Battery Security
- Propane Security
- Receiver Locks
- Power Cord Security



How it Works: GlowStep Revolution

GLOWSTEP REVOLUTION

The Ultimate Step System

GlowGuide
Multi use safety handrail



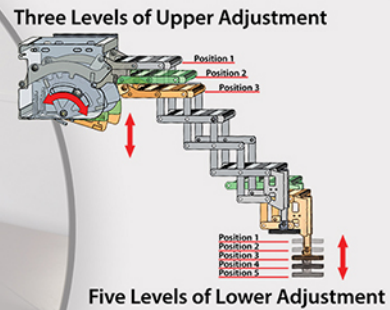
SafeStep
Step riser safety panels



All Terrain Landing Gear
Accommodates uneven terrain on bottom step



Precision Elevation Control
3 positions of precision elevation control between the RV entry and the top step



DirtDestroyer
Leave the dirt outside



Accessories to
make traveling
and camping fun!



QUESTIONS?

CONTACT US

Phone Number: 877-343-6933

Website: www.torkliftcentral.com

Email: support@torkliftcentral.com

Address:

315 Central Ave North
Kent, WA 98032

Hours: Mon-Fri: 8:30am-5:00pm
Sat: 8:30am-1pm