



OVER 40 YEARS OF INNOVATION, QUALITY, SAFETY.
IMPORTANT OWNER-OPERATOR INSTALLATION INSTRUCTIONS

F2016

Important Note: Instructions featured online do NOT show detailed drawings or figures referenced in the instructions. Complete instructions with more detailed drawings are available in the kit upon purchase.



Version Number: 8, Date: 4/26/2021 By: LC

TECH SUPPORT (800) 246-8132

**AFTER INSTALL, PLEASE GIVE
THIS BOOKLET TO YOUR CUSTOMER**

Warnings

Truck Bed and Camper Protection

Torklift **does not** recommend installing your camper on top of a plastic bed liner (or other compressible material such as foam). These materials can act as a spring, causing increased vertical truck camper movement independent of the vehicle. Plastic bed liners can slide on the truck bed surface, and the truck camper can slide on top of the bed liner. Using a plastic bed liner or similar compressible material will void your warranty and may additionally cause truck bed and/or camper damage.

Minor movement or settling can occur in some incidental harsh driving conditions (on or off-road). A rubber bed mat is recommended to protect the truck bed and camper, but is not a requirement to maintain the Torklift legendary lifetime warranty.

Suspension

To significantly reduce body roll, sag and sway Torklift strongly recommends the StableLoad. Torklift International StableLoads improve safety, handling, and to help level your truck. More information can be found at (www.Torklift.com/stableload).

If your truck is additionally equipped with suspension air bags Torklift cautions against over pressurization as this may lead to unsafe vehicle handling characteristics. We have found that airbags used in conjunction with StableLoads have allowed operators to lower air bag pressure by 50% or more. Only pressurize suspension air bags enough to level the truck.

Parts Inventory

Item Description	QTY
TIE-DOWN RECEIVER	2
STANDARD BENT TIE-DOWN INSERT	2
1/2" FLAT WASHER	7
1/2" BOLT FISHER	2
1/2" X 2" GRD 5 BOLT	4
5/8" HOOK BRACKET	3
5/8" HOOK BRACKET	1
3/16" 3-HOLE E-BRAKE BRACKET	1
3/8" HOOK BRACKET	1
5/16" X 2" (5cm) X 2" (5cm) CENTER HOLE PLATE WASHER	4
1" X 2" PLATE WASHER	1
7/16" BOLT FISHER	2
1/2" X 3-3/4" GRD 8 BOLT	1
7/16" X 2" GRD 5 BOLT	2
1/2" X 4" GRD 8 BOLT	

1/2" STAR WASHER	3
1/2" LOCK WASHER	7
1/2" GRD 8 NUT	7
7/16" NYLON NUT	1
1/4" SNAPPER PIN	2
1/2" SERRATED NUT	2
1/4" 2-HOLE PLATE WASHER	1

Installation Notes:

READ AND UNDERSTAND ALL INSTRUCTIONS BEFORE STARTING:

STEP 1) DRIVERS SIDE FIRST: Locate and remove the series of nuts that hold

the

gas tank cover to the frame, and let hang. (PHOTO A)

STEP 2) Locate the tank strap, and just to the right, there should be a notch

in

the gas tank. Take the 3/8" hook bracket and a 1/2" x 3-3/4" grade 8 bolt. Place the bolt through the tube on the hook bracket. Place it sideways against the tank, push up, and hook it onto the frame. (PHOTO B, C)

STEP 3) Locate the oval hole in the center of the frame to the right of the

tank

strap. Take the supplied 1/2" bolt fisher with the coiled end first, and insert it through the oval hole and up around the frame. Place one 1/2"x 2" grade 5 bolt along with one 1/2" star washer and one 1"(2cm) x 2"(5cm) plate washer onto the bolt fisher and pull it through the frame until it sticks out of the oval hole. Leave the bolt fisher attached. (PHOTO D, E)

STEP 4) Take one 5/8" hook bracket and one 1/2" x 4" grade 8 bolt and

hook it

to the top of the frame above and to the left of the previously installed bolt. (PHOTO F)

NOTE: FOR THOSE VEHICLES THAT HAVE THE BOTTOM HOOK BRACKET ON THE LEFT SIDE OF THE TIE-DOWN RECEIVER, PROCEED TO STEP 6.

STEP 5) Locate the driver's side tie-down. Slide the end of the bolt fisher

through

the 5/8" hole to the right of the welded gusset. Place the tie-down against the frame with all previously installed fasteners through designated holes. (PHOTO G)

NOTE: FOR THOSE VEHICLES THAT HAVE THE BOTTOM HOOK BRACKET ON THE RIGHT SIDE OF THE TIE-DOWN RECEIVER, PROCEED TO STEP 9.

STEP 6)

Take one 1/2" flat washer, one 1/2" lock washer, and one 1/2" nut and place them onto each previously installed bolt. Tighten down to 75 ft-lbs(101nm) using a torque wrench. * Star washers help installations where no access is available with a wrench. Passenger side does not use star washers.

STEP 7) REPEAT INSTALLATION PASSENGER SIDE: Some electrical wires may need to be moved on either side of the frame. Install the bottom 5/8" hook bracket with one 1/2" x 3-3/4" to the right of the tie-down receiver. Install the top 5/8" hook bracket with the supplied 1/2" x 4" grade 8 bolt (PHOTO H)

STEP 8) Disconnect the e-brake bracket at the junction point in front of the rear spring perch. (For ease of installation of the e-brake relocating bracket, make sure the e-brake is disengaged. Slide the brake line through one of the holes and re-bolt it back into position. Using one 1/2" x 2" grade 5 bolt, one 1/2" flat washer, one 1/2" lock washer, and one 1/2" hex nut (PHOTO I, J)

COMPLETE:

STEP 9) Take one 1/2" flat washer, one 1/2" lock washer, and one 1/2" nut and place them onto each previously installed bolt. Hand tighten.

STEP 10) To the left of the tie-down receiver, place one 1/2" x 2" grade 5 bolt along with one 1" x 2" plate washer on the backside of the tie-down plate. Take the 1/4" 2-hole plate washer and place over previously installed bolt, and thread with one 1/2" serrated nut. Hand tightens.

NOTE: FOR THOSE VEHICLES THAT HAVE THE FACTORY SIDE IMPACT BRACKET (FSIB) IN PHOTOS, PROCEED TO STEP 11.

NOTE: FOR THOSE VEHICLES THAT DO NOT HAVE THE FACTORY SIDE IMPACT BRACKET (FSIB) IN PHOTOS, PROCEED TO STEP 14

STEP 11) Remove the 7/16" nut from the lower left corner of the factory side impact bracket. Place the other end of the 1/4" two hole plate washer over the 7/16" factory bolt. Replace the factory nut with one 1/2" flat washer and one 7/16" grade 5 nylon nut. Tighten to 50 ft-lbs(67nm) using a torque wrench. Tighten all other 1/2" fasteners to 75 ftlbs(101nm) using a torque wrench. (PHOTO K, L)

** Star washers help installations where no access is available with a wrench. Passenger side does not use star washers.*

STEP 12) -REPEAT INSTALLATION PASSENGER SIDE: Some electrical wires may need to be moved on either side of the frame. Install the bottom 5/8" hook bracket with one 1/2" x 3-3/4" to the right of the tie-down receiver. Install the top 5/8" hook bracket with the supplied 1/2" x 4" grade 8 bolt (PHOTO H)

STEP 13) Disconnect the e-brake bracket at the junction point in front of the rear spring perch. (For ease of installation of the e-brake relocating bracket, make sure the e-brake is disengaged. Slide the brake line through one of the holes and re-bolt it back into position. Using one 1/2"x 2" grade 5 bolt, one 1/2" flat washer, one 1/2" lock washer, and one 1/2" hex nut (PHOTO I, J)

COMPLETE:

STEP 14) Right above previously installed bolts and 1/4" two hole plate washer, there will be an elongated oval hole. Take the 7/16" bolt fisher and thread one 7/16" x 2" grade 5 bolt, one 1/2" star washer and one 1"(2cm) x 2"(5cm) plate washer and slide them one by one through the hole oval hole and pull back through. Place a 2" x 2" center hole plate washer over the 7/16" bolt and one 1/2" flat washer and one 7/16" grade 5 nylon nut. Tighten to 50 ft-lbs(67nm) using a torque wrench. Tighten all other 1/2" fasteners to 75 ft-lbs(101nm) using a torque wrench. (PHOTO M, N)

** Star washers help installations where no access is available with a wrench. Passenger side does not use star washers.*

STEP 15) -REPEAT INSTALLATION PASSENGER SIDE: Some electrical wires may need to be moved on either side of the frame. Install the bottom 5/8" hook

bracket with one 1/2" x 3-3/4" to the right of the tie-down receiver. Install the top 5/8" hook bracket with the supplied 1/2" x 4" grade 8 bolt (PHOTO H)

STEP 16) Disconnect the e-brake bracket at the junction point in front of the re spring perch. (For ease of installation of the e-brake relocating bracket, make sure the e-brake is disengaged. Slide the brake line through one of the holes and re-bolt it back into position. Using one 1/2"x 2" grade 5 bolt, one 1/2" flat washer, one 1/2" lock washer, and one 1/2" Hex nut (PHOTO I, J)

Important Note: Instructions featured online do NOT show detailed drawings or figures referenced in the instructions. Complete instructions with more detailed drawings are available in the kit upon purchase.

HOOK BRACKETS INSTALLED TO FRAME:

SHOWING HOW IT HOOKS TO THE FRAME:

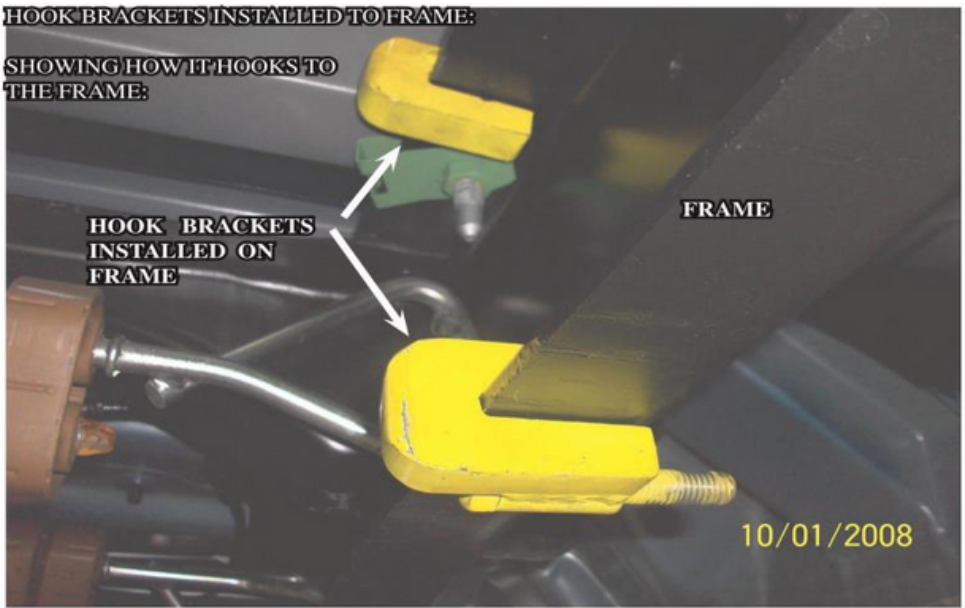


PHOTO A

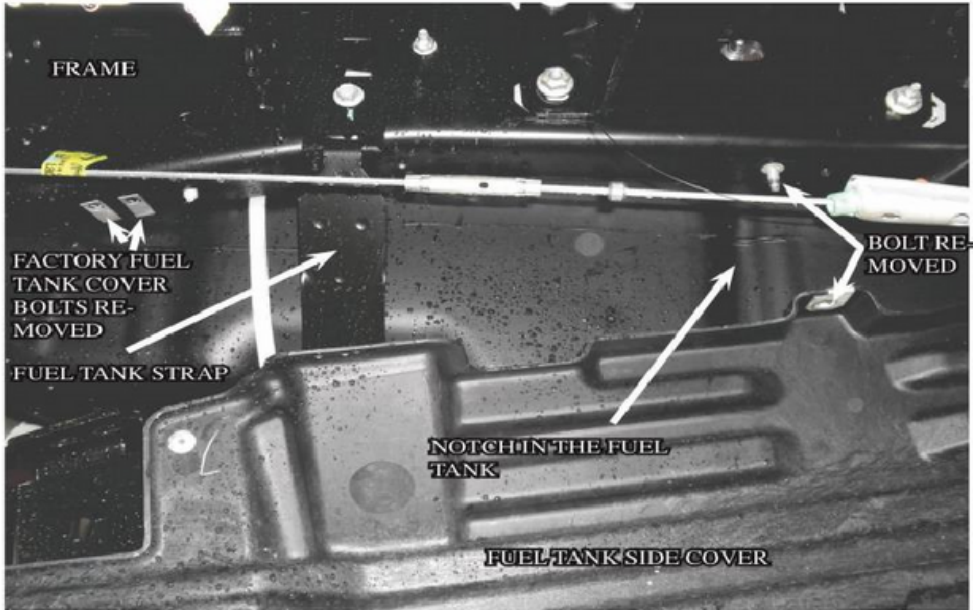


PHOTO B

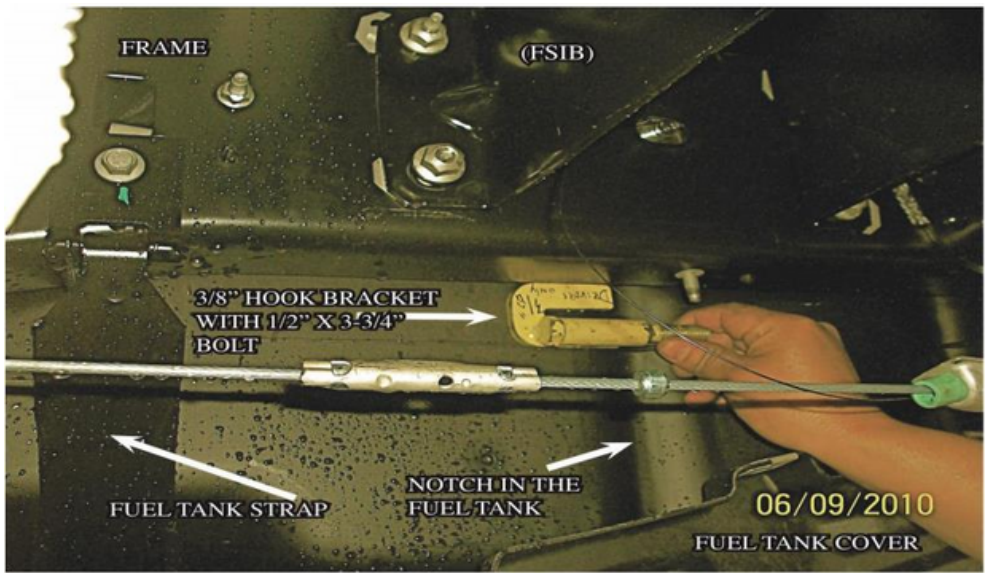


PHOTO C

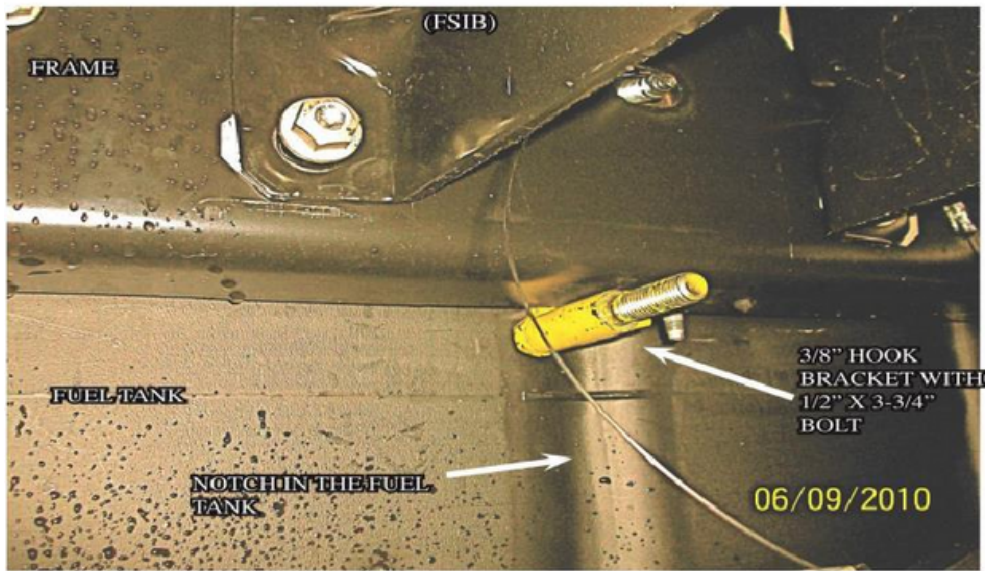


PHOTO D

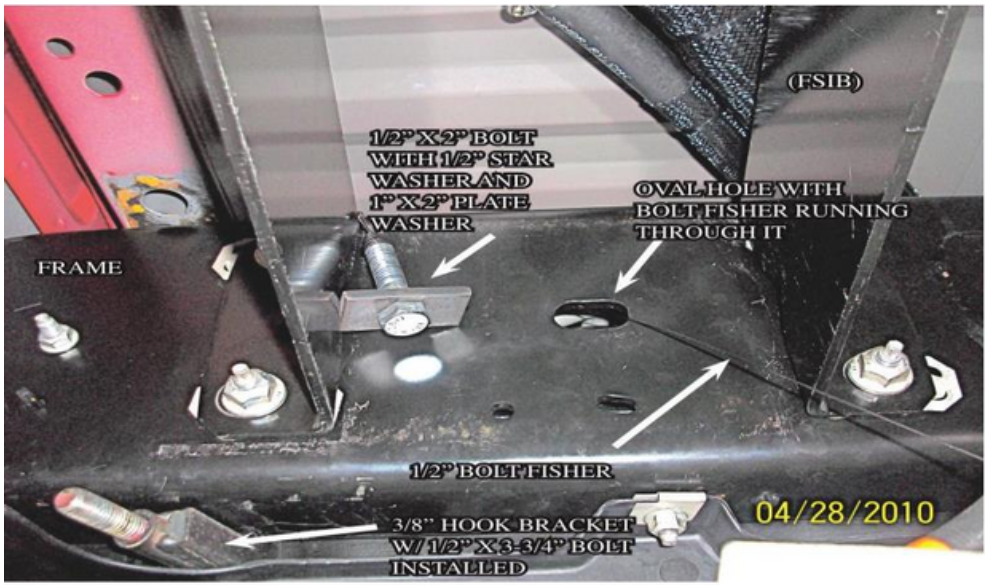


PHOTO E



PHOTO F

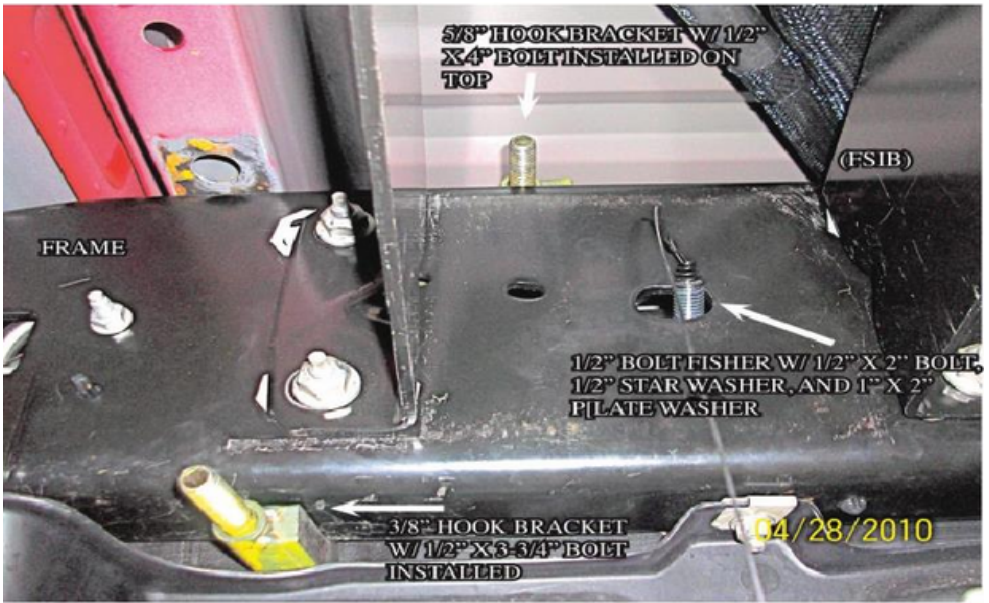


PHOTO G

Important Note: Instructions featured online do NOT show detailed drawings or figures referenced in the instructions. Complete instructions with more detailed drawings are available in the kit upon purchase.

Important Note: Instructions featured online do NOT show detailed drawings or figures referenced in the instructions. Complete instructions with more detailed drawings are available in the kit upon purchase.

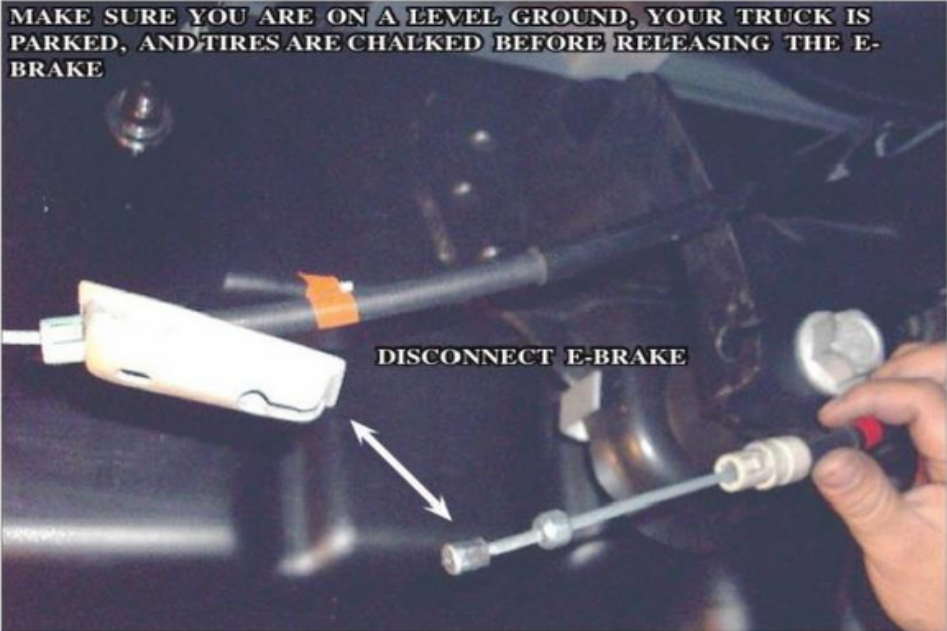


PHOTO J



PHOTO K

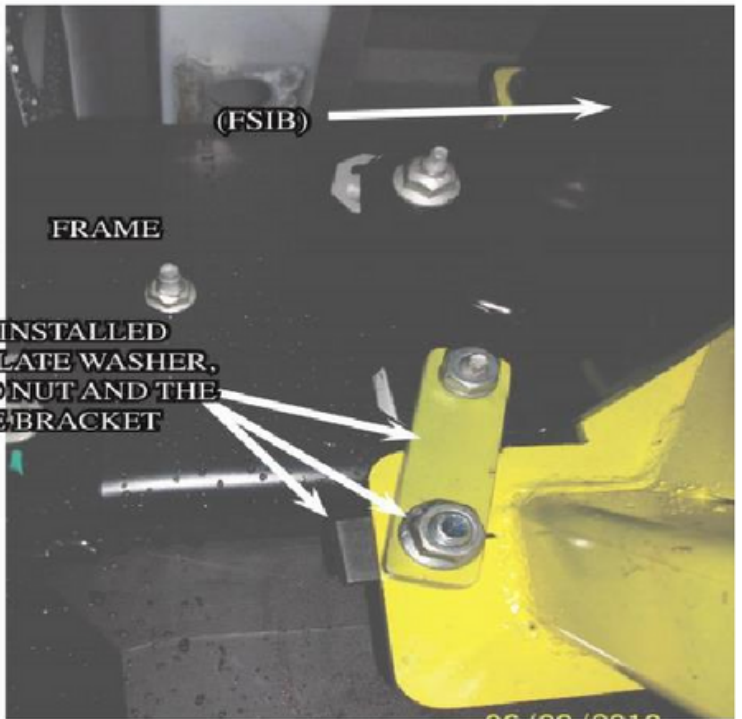


PHOTO L

Important Note: Instructions featured online do NOT show detailed drawings or figures referenced in the instructions. Complete instructions with more detailed drawings are available in the kit upon purchase.

Important Note: Instructions featured online do NOT show detailed drawings or figures referenced in the instructions. Complete instructions with more detailed drawings are available in the kit upon purchase.

IMPORTANT NOTE: Your tie down inserts are designed to have clearance inside of the receiver. This is to account for road debris, as well as aid in installation and removal. Some rattle may be expected if the inserts are left installed while not under load from the camper.

Installation is complete.

Torklift International Limited Lifetime Warranty Information

322 Railroad Ave North, Kent, WA 98032

Torklift will require proof of purchase to register, with pictures of any defective product before issuing a replacement. Torklift will not register any product without proof of purchase, which can be faxed, scanned, emailed, or mailed to the information provided below. Torklift warrants its hitches, custom hitch receivers, frame mounted tie downs, turnbuckles, and accessories (excluding wire harnesses which carry a 90 day warranty) from date of purchase against defects in material and workmanship under normal use and service for the ownership life of the original consumer purchaser. All plastic, rubber, and/ or electrical components maintain a warranty of up to one year from the date of the purchase. ALL COMMERCIAL APPLICATIONS ARE WARRANTED FOR A PERIOD OF 90 DAYS FROM THE DATE OF INSTALLATION/SERVICE. Torklift will replace FREE OF CHARGE any part which proves defective in material or workmanship when presented to Torklift, TRANSPORTATION CHARGES PREPAID by purchaser, at the address above. THIS WARRANTY IS LIMITED TO DEFECTIVE PARTS REPLACEMENT ONLY. LABOR CHARGES AND/OR DAMAGE INCURRED IN INSTALLATION OR REPLACEMENT, AS WELL AS INCIDENTAL AND CONSEQUENTIAL DAMAGES CONNECTED THEREWITH ARE EXCLUDED. This warranty does not include the finish or paint on our products. Rusting, cracking or peeling of the finish is also excluded. Some states do not allow the exclusion or limitation of incidental or consequential damages, so the above limitation or exclusion may not apply to you. Any damage to Torklift products as a result of misuse, abuse, neglect, accident, improper installation or any use violation of instructions furnished by Torklift or WHEN USED IN ANY COMMERCIAL APPLICATION WILL VOID THE WARRANTY. This warranty gives you specific legal rights, and you may also have rights which vary from state to state. With warranty service, you may be able to go to a small claims court, a state court or a federal district court.



INTERNATIONAL

322 Railroad Ave North, Kent, WA 98032

Phone (800) 246-8132 Fax (253) 854-8003

Or visit our website: www.TorkLift.com

Dear Valued Customer,

Thank you for making TorkLift your choice for truck, camper packages and accessories for your vehicle. By choosing TorkLift products, you have chosen a company that has been serving the RV industry for nearly 40 years and whose name has become synonymous with strength, quality and advanced design and installation.

Please take a few moments of your time to complete the Product Registration Warranty Card on the next page. When registering your newly purchased TorkLift products, you can be assured that your contact information is secure and that you and your product are getting the attention and respect that you deserve.

Thank you again for choosing TorkLift quality products.

Register for your lifetime warranty and receive a free Torklift International gift.

To Fax: Send copies of the questionnaire, warranty card and receipt to
253-854-8003

To E-mail: Send copies of the questionnaire, warranty card and receipt to
warranty@torklift.com

To Mail: Send to Torklift International 322 Railroad Ave North, Kent, WA 98032



OFFICIAL WARRANTY REGISTRATION CARD

322 Railroad Ave North, Kent, Wa 98032

Please fill out this form completely and return to Torklift within 30 days of purchase accompanied by a copy of your original receipt

1. PART(S) PURCHASED

TODAY'S DATE: _____

PART#: _____ PART#: _____

PART#: _____ PART#: _____

PART#: _____ PART#: _____

2. PURCHASER INFORMATION

NAME: _____

ADDRESS: _____

CITY: _____ STATE: _____ ZIP / POSTAL CODE: _____

PHONE: (____) _____ - _____ EMAIL: _____

3. TRUCK INFORMATION

YEAR: _____ MAKE: _____

MODEL: _____ BED LENGTH: _____

4. CAMPER INFORMATION

YEAR: _____ MAKE: _____ MODEL: _____

5. DEALER INFORMATION

PURCHASED FROM: _____

ADDRESS: _____

CITY: _____ STATE: _____ ZIP / POSTAL: _____

INSTALLED BY: _____ OWNER ABOVE DEALER ANOTHER DEALER

IF ANOTHER DEALER, WHO: _____